

# 2024 GCE N LEVEL EXAMINATION RESULTS RELEASE 16 DECEMBER 2024

Assumption English School



*Labor, Omnia, Vincit*



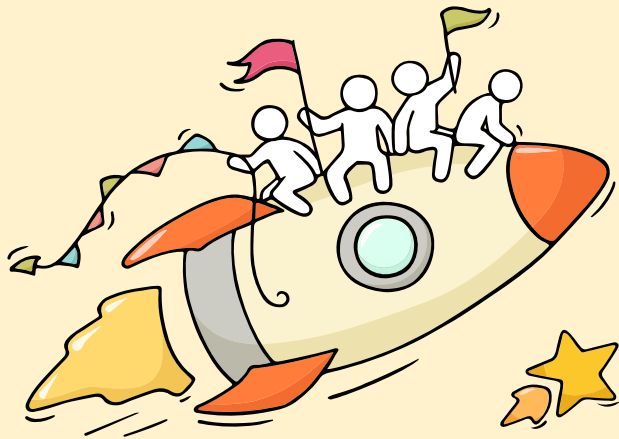
# Welcome Back!

Briefing Slides for Release of 2024 N-Level Results



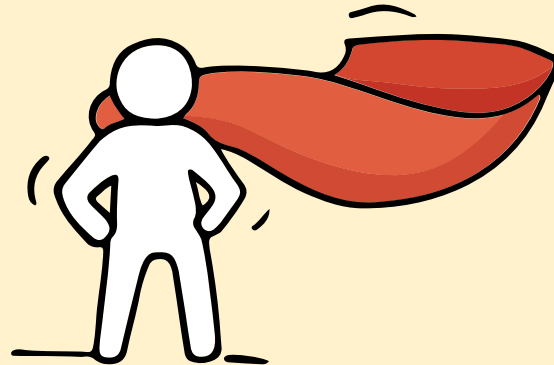
**Dear students,**

You have worked hard to reach this stage. Let's celebrate your efforts!





Remember that while **everyone's educational journey is different, we can each have a fulfilling outcome!**





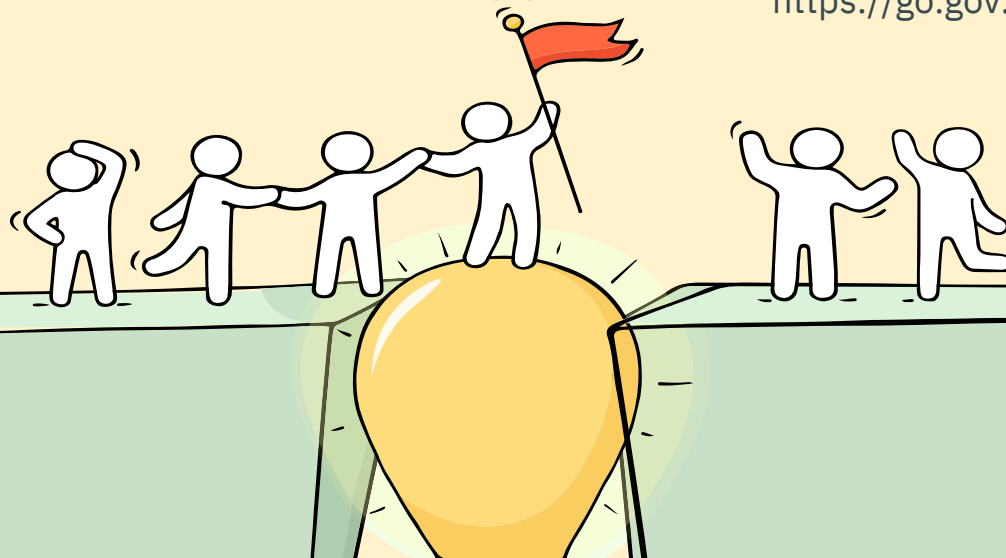
## Resources to support you as you receive your results

Receiving your results and making decisions about your post-secondary pathways can be exciting to some, but stressful to others.

Scan this QR code for an infographic with some helpful resources to support you.



<https://go.gov.sg/nlevelstudentresource>



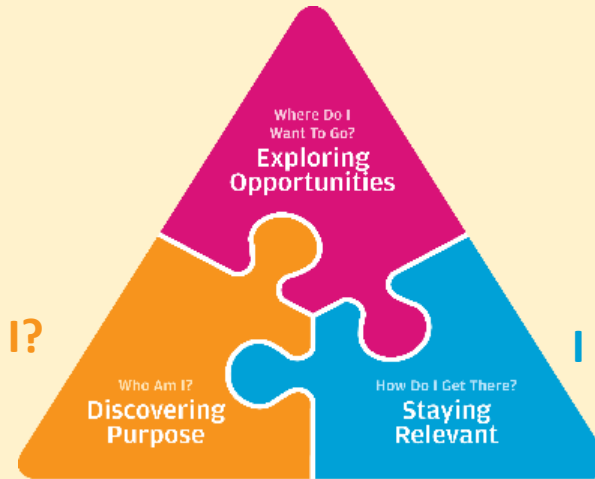
# Thinking about Your Next Step?

Consider these questions...

Where do I want to go?

Who am I?

How Do I Get There?



In the infographic, you can find resources which can help you make informed decisions.

## PLANNING YOUR NEXT STEP

These resources will help you chart your path ahead:



• What's Next Brochure  
<https://go.gov.sg/whats-next-nlevel>



• Contact the ECG Centre @ MOE  
<https://go.gov.sg/moe-ecg-centre>

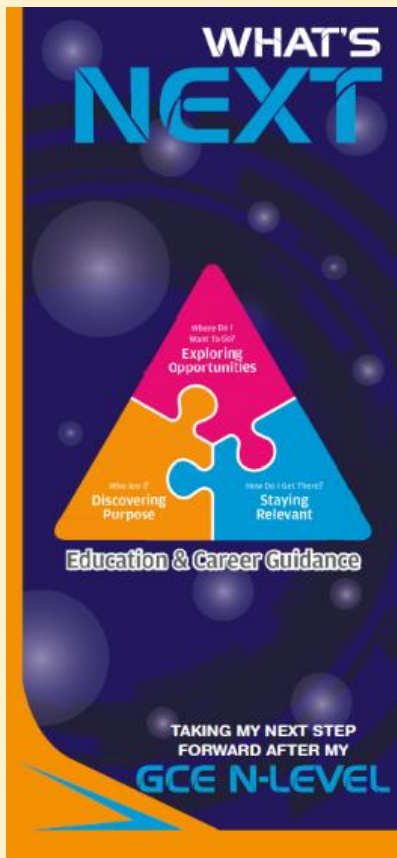


• MySkillsFuture Student Portal  
<https://go.gov.sg/MySFSec>



• Chat with your school's ECG Counsellor

# Resources to help you make informed decisions



### PLANNING YOUR NEXT STEP

These resources will help you chart your path ahead:

- **What's Next Brochure**  
<https://go.gov.sg/whats-next-nlevel>
- **Contact the ECG Centre @ MOE**  
<https://go.gov.sg/moe-ecg-centre>
- **MySkillsFuture Student Portal**  
<https://go.gov.sg/MySFSec>
- **Chat with your school's ECG Counsellor**



## MySkillsFuture Student Portal

Use the information and tools to explore various education and career pathways and take charge of your future.

# Resources to help you make informed decisions

## Post-Secondary Education

Learn more about the admissions exercises and programmes



<https://www.moe.gov.sg/post-secondary/admissions>

Learn more about the post-secondary education institutions



<https://moe.gov.sg/post-secondary/overview>



Be Empowered

# Discover On My Way



## About Discover On My Way (D:OMW)

Discover your education and career interests and chart your personal and professional future with **Discover On My Way!** Explore different careers, connect with industry professionals and peers, and get firsthand exposure at various job roles. Let's get you on your way to discovering!

[Join Programmes!](#)

We know – deciding on which course to take and what career to pursue isn't easy... Through programmes organised by NYC and our partners, you'll be able to meet professionals from various industries and youth on the same journey as you.



Outward Bound Job Taster



Esports Events Management Job Taster



Career conversation and discovery



<https://go.gov.sg/domw>



# Concerned about your next steps?

## Stop

- Calm yourself down. Take a few deep breaths.

## Think

- Think through the different options that are available for you.
- Remember that the N-Level is not the end point and is only one part of your life journey.

## Do

- Have conversations with trusted adults who know you well to advise and guide you (parents, teachers, ECG Counsellor).
- Decide and act based on your options.

**When you receive your results, you may experience a range of emotions.**

**Managing these emotions well will allow you to stay calm and make rational decisions.**

# Reaching out for support is a sign of strength


If you have questions about your options or are not coping well, you can reach out to trusted adults such as a parent/guardian, teacher, School Counsellor or ECG Counsellor. You can also talk to a trusted friend.



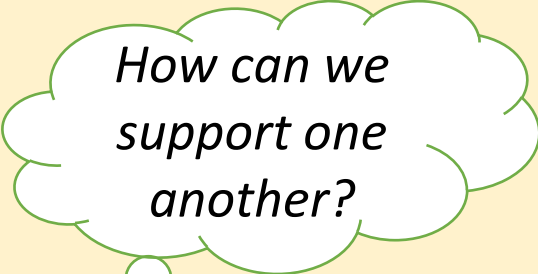
Make an appointment to speak with Ms Audrey Chua in school



<https://for.edu.sg/ecgforassumptionknights>




**Keep a lookout for  
some of these signs  
in your peers or in  
yourself**



*How can we  
support one  
another?*



**Having difficult emotions during a stressful and uncertain period is normal. Keep a look out for some of these signs:**

- 
- D** Deliberately avoiding others
  - I** Increased irritability, restlessness, agitation, stress and anxiety
  - S** Sending or posting moody messages on social media
  - T** Talking about death or dying
  - R** Reacting differently or gradually losing interest in things they used to like
  - E** Eating more than usual or having a much reduced appetite
  - S** Sleep pattern changes with difficulty falling asleep or oversleeping
  - S** Slowing down of energy levels

If you notice any of these signs in yourself or your friends,  
**have a chat with your School Counsellor or teacher,**

Or contact SOS 24-hour hotline at **1767** or SOS 24-hour CareText Whatsapp at **91511767**

For cyber wellness related matters, call Help123 at **1800-612-3123\*** or email **hello@help123.sg**

\*available only from Mon to Fri (excluding Public Holidays), from 9am - 6pm.

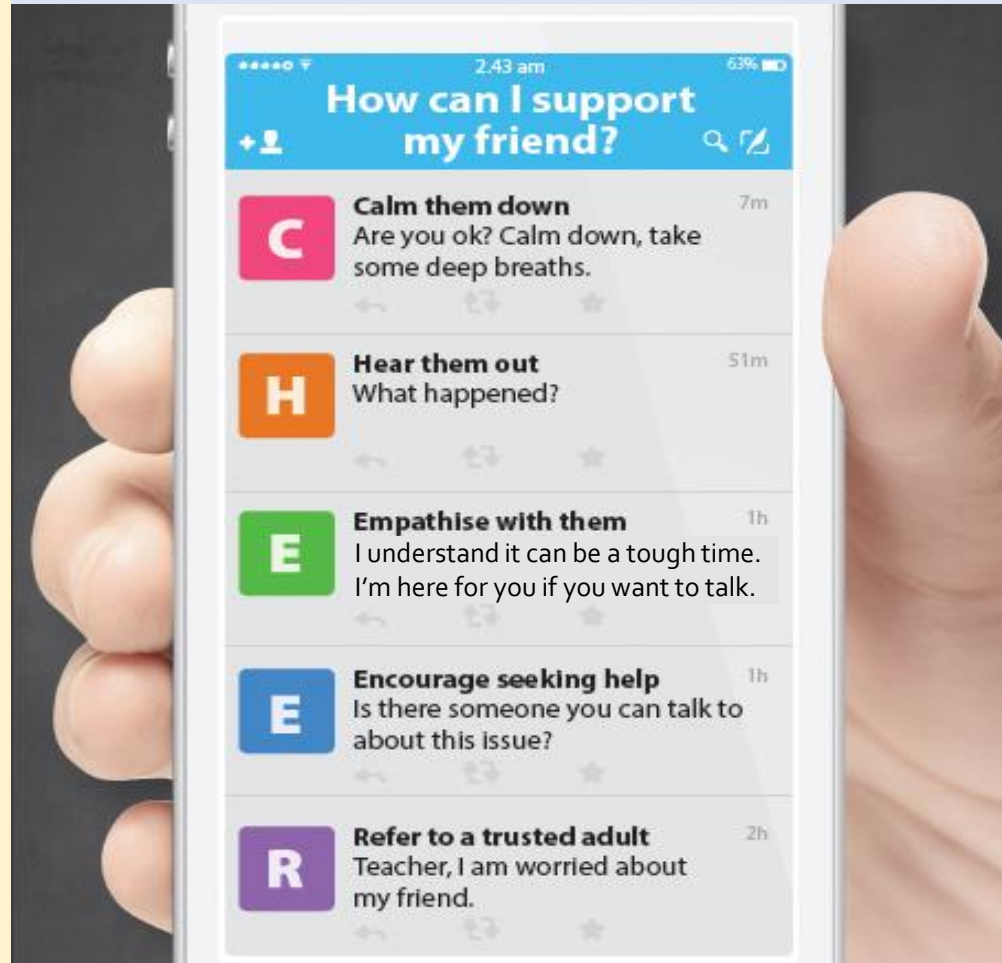


# Supporting Your Friend

- We may each experience different emotions upon receiving the results.
- You can share your friends' joy by congratulating them.
- If your friends appear to be disappointed with their results, encourage them.
- Alert a teacher if you are worried for them.



Keep a lookout for your friends in distress. You can support them in the following ways:



# Support is readily available for you.

There are other hotlines and chats available if you are more comfortable seeking help using these platforms. These can also be found in the infographic which you accessed earlier.



**SOS** provides round-the-clock emotional support for those in distress, thinking of suicide or affected by suicide.

Call: **1767**  
(24-hour helpline)

Whatsapp: **9151 1767**  
(24-hour Care Text)

**TOUCHline** is a helpline to provide youths with emotional support and practical advice.

Call: **1800-377 2252**  
Monday- Friday (Excluding Public Holidays):  
9am – 6pm

## Community Health Assessment Team

**(CHAT)** provides personalised and confidential mental health checks and consultation for youths. To speak with a youth support worker, you can:

Visit: **CHAT Hub at \*Scape, 2 Orchard Link, #04-01A**

Call: **6493 6500/ 6501**

Email: **CHAT@mentalhealth.sg**

**mindline.sg** is an online platform that provides tools, tips and resources to help you manage your health and well-being. Find out more at: [www.mindline.sg](http://www.mindline.sg)



**Carey** is an online platform by Care Corner that provides free mental health check-ins with mental health professionals. Find out more at: <https://carey.carecorner.org.sg/>

**ec2** is an e-Counselling Centre where you can talk to a trained counsellor about the issues you are facing, right where you are.

Chat with a counsellor at:

[www.ec2.sg](http://www.ec2.sg)

Monday – Friday (Excluding Public Holidays):  
10am – 12pm & 2pm – 5pm



**The N-Level  
examination is not  
the end point.**

**It is part of your  
education journey.**



# Details of Admissions Exercises

You can find the details of the various admissions exercises from the **Post-Secondary Admissions Exercises booklet** that can be downloaded from:

<https://www.moe.gov.sg/post-secondary/admissions>

- DPP
- PFP
- Joint Intake Exercise 'N' / 'E'
- NAFA Foundation Programme





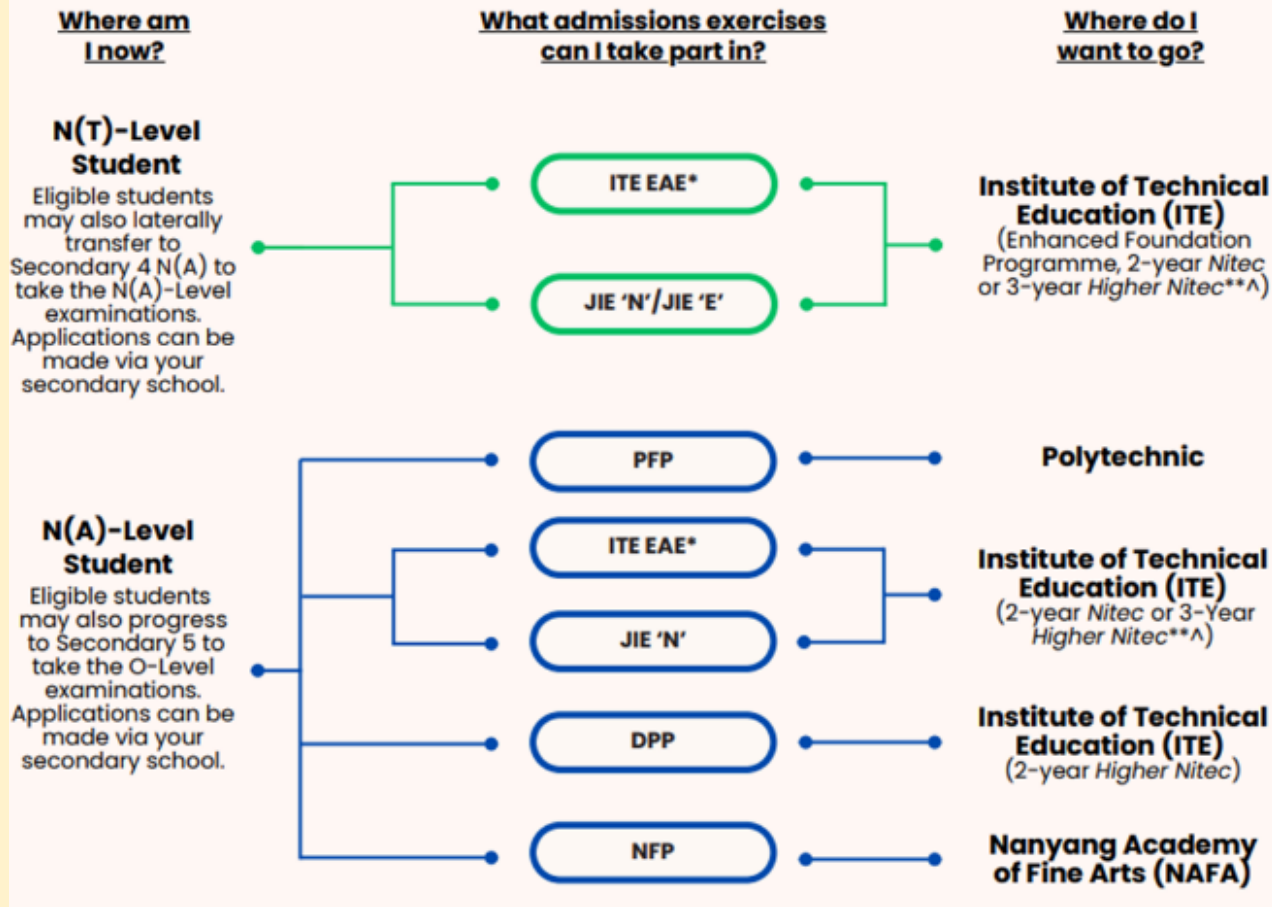
# Admissions Exercises

Things to note





# Post-Secondary Admissions Exercises for N-Level Students











<https://www.moe.gov.sg/post-secondary/admissions>



Source: A Guide to Post-Secondary Admissions Exercises

For more information on applying to these courses, you can visit <https://www.moe.gov.sg/post-secondary/admissions>

For the list of 3-year Higher Nitec courses, please visit <https://www.ite.edu.sg/courses/full-time-courses/nitec-and-3-year-higher-nitec>

# Application Timeline

Admissions Exercises	JIE 'N'  	PFP 
	JIE 'E'  	DPP 
	NFP 	
	DPP 	
	(1 <sup>st</sup> window of applications)	(2 <sup>nd</sup> window of applications)
Application Period	Dec 2024	Jan 2025

 ..... N(T)–Level Student  
 ..... N(A)–Level Student

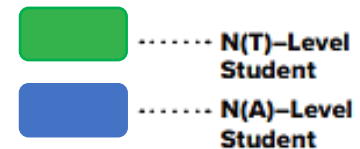
# Details of Admissions Exercises



## JIE 'N'/JIE 'E' – Joint Intake Exercise

The JIE 'N' is for 2-year *Nitec* or 3-year *Higher Nitec* courses offered by ITE. The JIE 'E' is for GCE N(T) students to apply for the 3-year *Nitec* course with Enhanced *Nitec* Foundation Programme.

**JIE 'N'/JIE 'E': [go.gov.sg/applyjie](https://go.gov.sg/applyjie)**



### **Computation of ITE Aggregate Points for Normal (Technical) Subjects**

<b>Normal (Technical) Grade</b>	<b>ITE Aggregate Points</b>
A	1
B	2
C	3
D	4
E / U	5

### **Computation of ITE Aggregate Points for Normal (Academic) Subjects**

<b>Normal (Academic) Grade</b>	<b>ITE Aggregate Points</b>
1, 2, 3	1
4	2
5	3
6 / U	4

# Details of Admissions Exercises



## PFP – Polytechnic Foundation Programme

PFP is a one-year programme that offers a practice-oriented curriculum taught by polytechnic lecturers to better prepare polytechnic-bound Secondary 4 N(A) students for entry into selected polytechnic diploma courses. PFP students are given provisional places in diploma programmes, subject to them passing all modules in the one-year programme.

**PFP:** [go.gov.sg/pfp](https://go.gov.sg/pfp)



## DPP – Direct-Entry-Scheme to Polytechnic Programme

DPP allows Secondary 4N(A) students to be admitted directly into selected 2-year *Higher Nitec* programmes at ITE without having to sit for the O-Level examinations or undergo a *Nitec* programme. DPP students who successfully complete their *Higher Nitec* courses at ITE and attain the required qualifying Grade Point Average (GPA) scores are guaranteed a place in a polytechnic diploma course mapped to their *Higher Nitec* course.

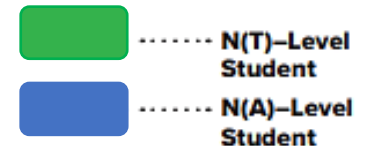
**DPP:** [go.gov.sg/applydpp](https://go.gov.sg/applydpp)



## NFP – NAFA Foundation Programme

NFP is a one-year practice-based programme that prepares N(A) Level holders to pursue a diploma in the creative arts. NFP students who successfully complete the programme will be offered a place in their chosen diploma course at NAFA.

**NFP:** [go.gov.sg/applynafafp](https://go.gov.sg/applynafafp)





Ministry of Education  
SINGAPORE

# Application Process - Nitec Courses (JIE)





# Key Dates for Jan 2025 Intake Exercise

Key Activity	Period for 2-Year and 3-Year Nitec Courses, and 3-Year and 4-year Higher Nitec courses	Remarks
<b>1st Phase (Main Phase)</b>		
Application	16 Dec 2024 (2.30pm) to 19 Dec 2024 (5pm)	Apply through the Internet at <a href="https://www.ite.edu.sg">https://www.ite.edu.sg</a> with NRIC / FIN and Date of Birth. You may also apply using SingPass.
Release of Results	30 Dec 2024 at 9am	Check results at <a href="https://istudent.ite.edu.sg">https://istudent.ite.edu.sg</a> with web ID and password
Acceptance of Course Offer Period	30 Dec 2024 to 3 Jan 2025	Accept course offer at <a href="https://istudent.ite.edu.sg">https://istudent.ite.edu.sg</a> with web ID and password
<b>2nd Phase (Late Application/Appeal Phase)</b>		
Application	30 Dec 2024 to 3 Jan 2025	Apply through the Internet at <a href="https://istudent.ite.edu.sg">https://istudent.ite.edu.sg</a> with NRIC / FIN and Date of Birth. You may also apply using SingPass.
Release of Results	10 Jan 2025 at 9am	Check results at <a href="https://istudent.ite.edu.sg">https://istudent.ite.edu.sg</a> with web ID and password
Acceptance of Course Offer Period	10 Jan 2025 to 12 Jan 2025	Accept course offer at <a href="https://istudent.ite.edu.sg">https://istudent.ite.edu.sg</a> with web ID and password
<b>3rd Phase (Final Top-up Phase)</b>		
Application	1 <sup>st</sup> Top-up Phase Application - 10 Jan to 17 Jan 2025 2 <sup>nd</sup> Top-up Phase Application - 23 Jan to 7 Feb 2025	Apply through the Internet at <a href="https://istudent.ite.edu.sg">https://istudent.ite.edu.sg</a> with NRIC / FIN and Date of Birth. You may also apply using SingPass.
Release of Results	1 <sup>st</sup> Top-up Phase - 14 Jan to 23 Jan 2025 2 <sup>nd</sup> Top-up Phase - 23 Jan to 13 Feb 2025	Check results at <a href="https://istudent.ite.edu.sg">https://istudent.ite.edu.sg</a> with web ID and password
Acceptance of Course Offer Period	1 <sup>st</sup> Top-up Phase - 14 Jan to 23 Jan 2025 2 <sup>nd</sup> Top-up Phase - 23 Jan to 13 Feb 2025	Accept course offer at <a href="https://istudent.ite.edu.sg">https://istudent.ite.edu.sg</a> with web ID and password
<b>Jan 2025 Intake Term Commencement Date: 13 Jan 2025</b>		

# Pathways for the 4NA / 4NT students

## ITE (Nitec Courses)

- Refer to individual course details and requirements in the Joint Intake Exercise (JIE) booklet.
- The courses that you are eligible for are printed in your result slip – **Form N**. You can refer to the result slip to decide on your desired course.
- **Go online and apply in the next few days BEFORE 19 December 2024, Thursday (5.00 pm)**. It starts from today.
- Computers are available at the ITE Institutes for applicants to use during the application period.



# Application Process

## - DPP (Higher Nitec Courses)



# Key Dates for DPP Application

Key Activity	Dates
<b>Application</b>	<b>Mon 16 Dec 2024 (2.30pm) to Thu 19 Dec 2024 (5pm)</b>
<b>Results of Main Application and Course Acceptance Period</b>	Fri 20 Dec 2024 (2pm) to Thu 26 Dec 2024
<b>Appeal Application Period</b>	Fri 20 Dec 2024 (2pm) to Thu 26 Dec 2024
<b>Results of Appeal and Course Acceptance Period</b>	Mon 30 Dec 2024 to Fri 3 Jan 2025
<b>College Reporting &amp; Term Commencement (for Main and Appeal phases)</b>	Mon 13 Jan 2025
<b>Final Application Period</b>	To Be Confirmed
<b>Results of Final Application and Course Acceptance</b>	Fri 17 Jan 2025 to Tue 21 Jan 2025
<b>College Reporting (for final application phase)</b>	Wed 22 Jan 2025
<b>Final Appeal Period</b>	Fri 17 Jan 2025 to Tue 4 Feb 2025
<b>Results of Final Appeal and Course Acceptance</b>	Wed 22 Jan 2025 and Wed 12 Feb 2025 (5pm)

## For students who are interested in the DPP:

- You should apply to the DPP between 16 Dec 2024 (2.30pm) to 19 Dec 2024 (5 pm).
- Results will be out on **20 Dec 2024 at 2.00 pm**.
- Students who have accepted their DPP offers in December should **not** continue with Sec 5.



## For students who are uncertain and/or interested in both PFP and DPP:

- **If you are certain that you do not want to continue with Sec 5 and pursue the GCE O-Levels**, you may apply for the DPP in December. Upon the release of the GCE O-Level results in January, eligible students may be invited for the PFP. If you are offered and accept a PFP place, you may withdraw from the DPP. Students who are eligible will be alerted by their FTs.

### Alternatively,

- You may progress to Sec 5 first. Upon release of the GCE O-Level results in January, you may then apply for the DPP or wait for the PFP invitation concurrently.



# Application Process

## - Progress to Secondary 5NA



# Pathways for the 4NA students

## Secondary 5 NA

- ELMAB3 of 19 points and less. All subjects used for the aggregate must be at least Grade 5.
- **Attend a compulsory briefing on 17 December 2024, Tuesday at 8.00 am in the school library.**
- Collect the GREEN application form at the back of the rooms and submit to the General Office by **18 December 2024, Wednesday, 12.00 pm.**
- Report to school on **2 January 2025, Thursday** in proper school attire.
- Remember to purchase your books before school reopens.





# Application Process (for 4NA only)

- Retain in Secondary 4NA



# Pathways for the 4NA students

## Retain in Secondary 4 NA

- Eligible students will be informed by your FTs.
- Apply for ITE (Nitec) Courses to maximise your options.
- Collect the REPEAT PINK form from the back of the rooms.
- Call the General Office at 65729100 to make an appointment to meet the school leaders with your parents by tomorrow, 17 Dec 2024 12.00 noon.
- Date of meeting: **Wednesday, 18 December 2024 from 9.00 am – 12.00 pm**
- On the meeting day, you **MUST submit** the PINK application form, your ITE course submission and relevant documents.



# Other administrative matters

- Candidates who wish to review their GCE 'N' Level Examination results must submit their appeals and make payment to the school by **Thursday, 19 December 2024, 5:00 pm.**
- The appeal fee per subject will be as follows:  
Singaporean Citizen - \$112.35  
Singapore Permanent Resident - \$113.40  
International Student - \$113.40



# Other administrative matters

- Candidates who wish to made amendments to their certificates must submit their appeals and make payment to the school by **Thursday, 19 December 2024, 5:00 pm.**
- The amendment request fee per certificate will be **\$50.**

